

Main Characteristics 主要技术参数 电压等级:150V~150V AC/DC 电流范围:from70A to 1000A gR

Catalog Numbers 订货号	Designation Type 型号规格	Electrical Characteristics 电气特性				
		Rating Ampere 电流 (A)	Rating Voltage 电压 $U_n(V)$	Pre-arcing 弧前 $I^2t (A^2S)$	Total 熔断 I^2t @(A^2S)	Watts Loss 功耗(W)
KRA-70B	KRA-70A/150V AC/DC	70A	150V/150V AC/DC	467	4000	6.7
KRA-80B	KRA-80A/150V AC/DC	80A	150V/150V AC/DC	670	6000	7.7
KRA-100B	KRA-100A/150VAC/DC	100A	150V/150V AC/DC	1200	12000	9.0
KRA-125B	KRA-125A/150VAC/DC	125A	150V/150V AC/DC	1870	18000	11.2
KRA-150B	KRA-150A/150VAC/DC	150A	150V/150V AC/DC	2700	26000	13.5
KRA-200B	KRA-200A/150VAC/DC	200A	150V/150V AC/DC	4780	45000	17.6
KRA-250B	KRA-250A/150V AC/DC	250A	150V/150V AC/DC	7470	70000	22.5
KRA-300B	KRA-300A/150V AC/DC	300A	150V/150V AC/DC	10760	100000	27
KRA-350B	KRA-350A/150V AC/DC	350A	150V/150V AC/DC	15700	140000	30.6
KRA-400B	KRA-400A/150V AC/DC	400A	150V/150V AC/DC	20340	180000	35.2
KRA-500B	KRA-500A/150V AC/DC	500A	150V/150V AC/DC	39000	190000	40
KRA-600B	KRA-600A/150V AC/DC	600A	150V/150V AC/DC	46000	200000	47
KRA-700B	KRA-700A/150V AC/DC	700A	150V/150V AC/DC	75000	220000	49
KRA-800B	KRA-800A/150V AC/DC	800A	150V/150V AC/DC	92000	280000	58
KRA-1000B	KRA-1000A/150V AC/DC	1000A	150V/150V AC/DC	170000	510000	60

Ratings等级:

Volts电压:— 150Vac/dc;

Amps电流:— 70A~1000A;

IR分断能力:— 100KA Sym. (70A~400A);

— 200KA Sym. (450A~1000A);

— 20KA @150Vdc (70A~800A);

— 100KA @ 80Vdc (70A~400A);

Features and Benefits 特性和优点:

- Excellent dc performance 极佳的直流特性;
- Low arc voltage and low energy let-through (I2t)低电弧电压、低电弧能量值;
- Low watts loss 低功耗;
- Superior cycling capability 循环使用性能;

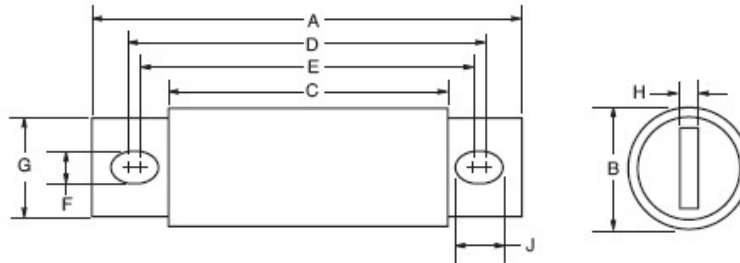
Typical Applications 典型应用:

- DC common bus 电动汽车/直流母线;
- DC drives 直流驱动;
- Power converters/rectifiers 大功率逆变器/整流单元;
- Reduced voltage starters 软启动/变频启动;



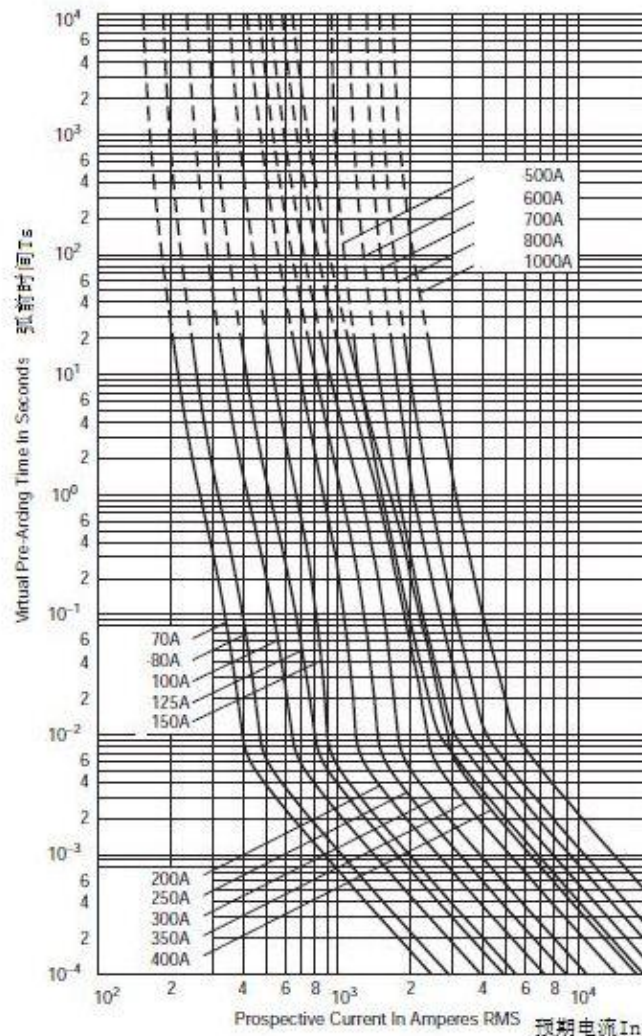
Main Characteristics 主要技术参数 电压等级:150V~150V AC/DC 电流范围:from 70A to 1000A gR

Dimensions 安装尺寸示意图(mm):



Catalog Number 订货号	A	B	C	D	E	F	G	H	J	安装中心距离mm
KRA-70B~400B	68	φ25	29	55	42	9	18	3	13	49±1
KRA-500B~1000B	92	φ36	32	72	46	10.5	25	5.5	20	59±1

Time-Current Curve 时间-电流特性曲线图:



Main Characteristics 主要技术参数 电压等级:250V~250V AC/DC 电流范围:from35A to 800A gR

Catalog Numbers 订货号	Designation Type 型号规格	Electrical Characteristics 电气特性				
		Rating Ampere 电流 (A)	Rating Voltage 电压 $U_n(V)$	Pre-arcing 弧前 $I^2t (A^2S)$	Total 熔断 I^2t @ (A^2S)	Watts Loss 功耗(W)
KRX-35B	KRX-35A/250V AC/DC	35A	250V/250V AC/DC	50	230	4.2
KRX-40B	KRX-40A/250V AC/DC	40A	250V/250V AC/DC	60	310	5.2
KRX-45B	KRX-45A/250V AC/DC	45A	250V/250V AC/DC	80	390	5.7
KRX-50B	KRX-50A/250V AC/DC	50A	250V/250V AC/DC	100	520	6
KRX-60B	KRX-60A/250V AC/DC	60A	250V/250V AC/DC	140	740	7
KRX-70B	KRX-70A/250V AC/DC	70A	250V/250V AC/DC	330	1400	7.2
KRX-80B	KRX-80A/250V AC/DC	80A	250V/250V AC/DC	430	1850	8.1
KRX-90B	KRX-90A/250V AC/DC	90A	250V/250V AC/DC	570	2450	9
KRX-100B	KRX-100A/250V AC/DC	100A	250V/250V AC/DC	740	3150	10
KRX-125B	KRX-125A/250V AC/DC	125A	250V/250V AC/DC	1130	4850	12.5
KRX-150B	KRX-150A/250V AC/DC	150A	250V/250V AC/DC	1620	6950	15.7
KRX-175B	KRX-175A/250V AC/DC	175A	250V/250V AC/DC	2170	9300	18.5
KRX-200B	KRX-200A/250V AC/DC	200A	250V/250V AC/DC	2790	12000	22
KRX-225B	KRX-225A/250V AC/DC	225A	250V/250V AC/DC	3210	14700	24
KRX-250B	KRX-250A/250V AC/DC	250A	250V/250V AC/DC	3960	18100	27
KRX-275B	KRX-275A/250V AC/DC	275A	250V/250V AC/DC	47200	21600	31
KRX-300B	KRX-300A/250V AC/DC	300A	250V/250V AC/DC	6000	27300	32
KRX-350B	KRX-350A/250V AC/DC	350A	250V/250V AC/DC	10600	48600	39
KRX-400B	KRX-400A/250V AC/DC	400A	250V/250V AC/DC	14500	66100	44
KRX-450B	KRX-450A/250V AC/DC	450A	250V/250V AC/DC	22100	101000	49
KRX-500B	KRX-500A/250V AC/DC	500A	250V/250V AC/DC	28000	128000	54
KRX-600B	KRX-600A/250V AC/DC	600A	250V/250V AC/DC	41100	188000	62
KRX-700B	KRX-700A/250V AC/DC	700A	250V/250V AC/DC	48800	190000	72
KRX-800B	KRX-800A/250V AC/DC	800A	250V/250V AC/DC	59000	230000	84

Ratings等级: Volts电压:— 250Vac/dc; Amps电流:35A~800A; IR分断能力:200KA RSM

Features and Benefits 特性和优点:

- Excellent dc performance 极佳的直流特性;
- Low arc voltage and low energy let-through (I2t)低电弧电压、低电弧能量值;
- Low watts loss 低功耗;
- Superior cycling capability 循环使用性能;

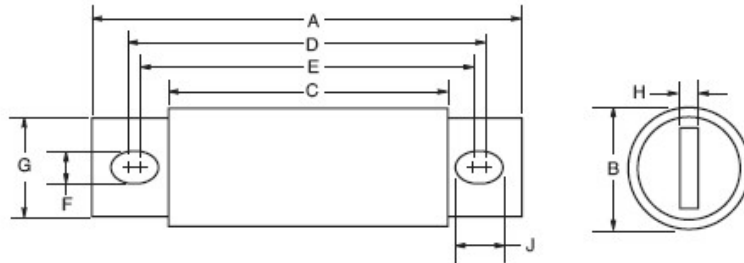
Typical Applications 典型应用:

- DC common bus 电动汽车/直流母线;
- DC drives 直流驱动;
- Power converters/rectifiers 大功率逆变器/整流单元;
- Reduced voltage starters 软启动/变频启动;



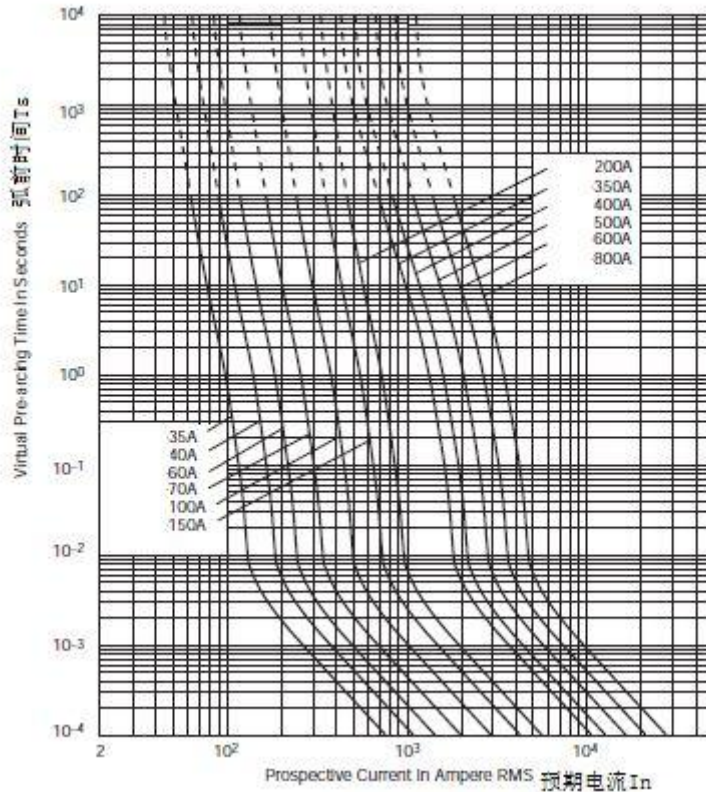
Main Characteristics 主要技术参数 电压等级:250V~250V AC/DC 电流范围:from35A to 800A gR

Dimensions 安装尺寸示意图(mm):



Catalog Numbers 订货号	A	B	C	D	E	F	G	H	J	安装中心距离 mm
KRX-35B~60B	81	φ 20	40	66	57	9	15	3	13.5	60±1mm
KRX-70B~200B	80	φ 30	40	62	56	9	22	5	12	60±1mm
KRX-225B~600B	99	φ 36	40	75	57	10.5	25	5.5	20	66±1mm
KRX-700B~800B	98	φ 51	40	77	58	10.5	38	6	19	66±1mm

Time-Current Curve 时间-电流特性曲线图:



Main Characteristics 主要技术参数 电压等级:500V~500V AC/DC 电流范围:from35A to 1200A gR

Catalog Numbers 订货号	Designation Type 型号规格	Electrical Characteristics 电气特性				
		Rating Ampere 电流 (A)	Rating Voltage 电压 $U_n(V)$	Pre-arcing 弧前 $I^2t (A^2S)$	Total 熔断 I^2t @ (A^2S)	Watts Loss 功耗(W)
KRH-35B	KRH-35A/500V AC/DC	35A	500V/500V AC/DC	130	920	5.5
KRH-40B	KRH-40A/500V AC/DC	40A	500V/500V AC/DC	180	1250	6.9
KRH-50B	KRH-50A/500V AC/DC	50A	500V/500V AC/DC	280	1930	8.0
KRH-60B	KRH-60A/500V AC/DC	60A	500V/500V AC/DC	410	2700	9.4
KRH-70B	KRH-70A/500V AC/DC	70A	500V/500V AC/DC	420	2730	12.7
KRH-80B	KRH-80A/500V AC/DC	80A	500V/500V AC/DC	430	2740	13.4
KRH-90B	KRH-90A/500V AC/DC	90A	500V/500V AC/DC	590	3800	15.6
KRH-100B	KRH-100A/500V AC/DC	100A	500V/500V AC/DC	730	4700	16.8
KRH-125B	KRH-125A/500V AC/DC	125A	500V/500V AC/DC	1100	5950	24
KRH-150B	KRH-150A/500V AC/DC	150A	500V/500V AC/DC	2000	10800	26
KRH-175B	KRH-175A/500V AC/DC	175A	500V/500V AC/DC	2800	15300	30
KRH-200B	KRH-200A/500V AC/DC	200A	500V/500V AC/DC	3900	21000	32
KRH-225B	KRH-225A/500V AC/DC	225A	500V/500V AC/DC	4600	23300	39
KRH-250B	KRH-250A/500V AC/DC	250A	500V/500V AC/DC	6300	32200	41
KRH-275B	KRH-275A/500V AC/DC	275A	500V/500V AC/DC	7900	40300	46
KRH-300B	KRH-300A/500V AC/DC	300A	500V/500V AC/DC	9800	49800	51
KRH-325B	KRH-325A/500V AC/DC	325A	500V/500V AC/DC	13700	63800	53
KRH-350B	KRH-350A/500V AC/DC	350A	500V/500V AC/DC	14500	72900	58
KRH-400B	KRH-400A/500V AC/DC	400A	500V/500V AC/DC	19200	96700	65
KRH-450B	KRH-450A/500V AC/DC	450A	500V/500V AC/DC	25700	127000	74
KRH-500B	KRH-500A/500V AC/DC	500A	500V/500V AC/DC	29200	149000	84
KRH-600B	KRH-600A/500V AC/DC	600A	500V/500V AC/DC	41300	206000	108
KRH-700B	KRH-700A/500V AC/DC	700A	500V/500V AC/DC	55000	298000	120
KRH-800B	KRH-800A/500V AC/DC	800A	500V/500V AC/DC	76200	409000	129
KRH-1000B	KRH-1000A/500V AC/DC	1000A	500V/500V AC/DC	92000	450000	145
KRH-1200B	KRH-1200A/500V AC/DC	1200A	500V/500V AC/DC	122000	600000	180

Ratings等级: Volts电压:— 500Vac/dc; Amps电流:35A~1200A;

IR 分断能力: 200KA RSM/@500VAC; 50KA@500VDC.

Features and Benefits 特性和优点:

- Excellent dc performance 极佳的直流特性;
- Low arc voltage and low energy let-through (I2t)低电弧电压、低电弧能量值;
- Low watts loss 低功耗; • Superior cycling capability 循环使用性能;

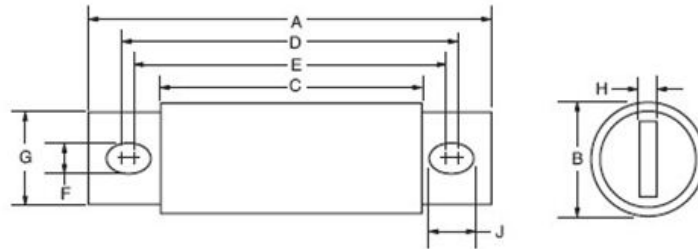
Typical Applications 典型应用:

- DC common bus 电动汽车/直流母线; • DC drives 直流驱动;
- Power converters/rectifiers 逆变器/整流单元• Reduced voltage starters 软启/变频启动.



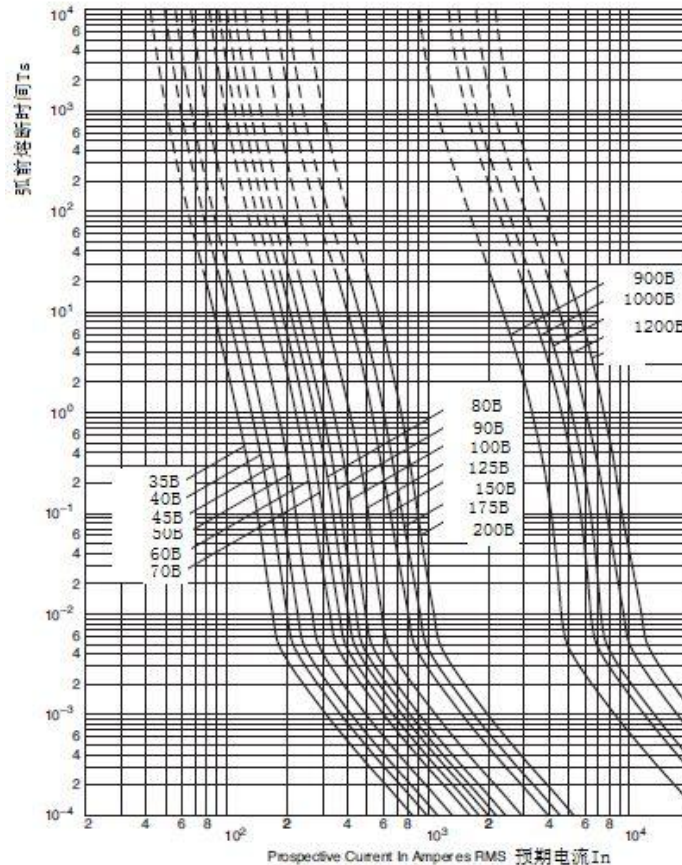
Main Characteristics 主要技术参数 电压等级:500V~500V AC/DC 电流范围:from35A to 1200A gR

Dimensions 安装尺寸示意图(mm):



Catalog Numbers 订货号	A	B	C	D	E	F	G	H	J	安装中心距离mm
KRH-35B~60B	81	φ 20	40.5	67	53	9	15	3	14	60.5±1mm
KRH-70B~100B	90	φ 25	44	75	62	9	18	3	14.5	68±1mm
KRH-125B~200B	90	φ 30	47	72	60	9	22	5	12	65±1mm
KRH-225B~400B	112	φ 36	53	90	68	10.5	25	5.5	20	80±1mm
KRH-450B~600B	111	φ 51	53	90	70	10.5	38	6	19	80±1mm
KRH-700B~800B	161	φ 64	53	126	87	13.5	50	10	33	107±1mm
KRH-1000B~1200B	177	φ 76	82	139	114	16	60	11	29	127±1mm

Time-Current Curve 时间-电流特性曲线图:



Main Characteristics 主要技术参数 电压等级:600V~600V AC/DC 电流范围:from35A to 600A gR

Catalog Numbers 订货号	Designation Type 型号规格	Electrical Characteristics 电气特性				
		Rating Ampere 电流 (A)	Rating Voltage 电压 $U_n(V)$	Pre-arcing 弧前 $I^2t (A^2S)$	Total 熔断 I^2t @(A^2S)	Watts Loss 功耗(W)
KRF-35B	KRF-35A/600VDC/AC	35A	600V/600V DC/AC	270	1800	5.2
KRF-40B	KRF-40A/600VDC/AC	40A	600V/600V DC/AC	350	2400	6.3
KRF-45B	KRF-45A/600VDC/AC	45A	600V/600V DC/AC	450	3000	6.7
KRF-50B	KRF-50A/600VDC/AC	50A	600V/600V DC/AC	550	3600	7.4
KRF-60B	KRF-60A/600VDC/AC	60A	600V/600V DC/AC	800	5400	7.5
KRF-70B	KRF-70A/600VDC/AC	70A	600V/600V DC/AC	4000	13000	7.6
KRF-80B	KRF-80A/600VDC/AC	80A	600V/600V DC/AC	5300	17000	8.9
KRF-90B	KRF-90A/600VDC/AC	90A	600V/600V DC/AC	6700	22000	9.7
KRF-100B	KRF-100A/600VDC/AC	100A	600V/600V DC/AC	8300	27000	11
KRF-110B	KRF-110A/600VDC/AC	110A	600V/600V DC/AC	9500	31000	11
KRF-125B	KRF-125A/600VDC/AC	125A	600V/600V DC/AC	13000	42000	12
KRF-150B	KRF-150A/600VDC/AC	150A	600V/600V DC/AC	19000	60000	14
KRF-175B	KRF-175A/600VDC/AC	175A	600V/600V DC/AC	25000	80000	16
KRF-200B	KRF-200A/600VDC/AC	200A	600V/600V DC/AC	33000	110000	19
KRF-225B	KRF-225A/600VDC/AC	225A	600V/600V DC/AC	42000	140000	21
KRF-250B	KRF-250A/600VDC/AC	250A	600V/600V DC/AC	52000	170000	26
KRF-300B	KRF-300A/600VDC/AC	300A	600V/600V DC/AC	75000	240000	29
KRF-350B	KRF-350A/600VDC/AC	350A	600V/600V DC/AC	100000	340000	35
KRF-400B	KRF-400A/600VDC/AC	400A	600V/600V DC/AC	130000	490000	37
KRF-450B	KRF-450A/600VDC/AC	450A	600V/600V DC/AC	170000	620000	42
KRF-500B	KRF-500A/600VDC/AC	500A	600V/600V DC/AC	210000	770000	47
KRF-600B	KRF-600A/600VDC/AC	600A	600V/600V DC/AC	300000	1100000	56

Ratings等级:

Volts电压:— 600Vac/dc;

Amps电流:35A~600A;

IR 分断能力: 200KA RSM/@600VAC;

Features and Benefits 特性和优点:

- Excellent dc performance 极佳的直流特性;
- Low arc voltage and low energy let-through (I2t)低电弧电压、低电弧能量值;
- Low watts loss 低功耗; • Superior cycling capability 循环使用性能;

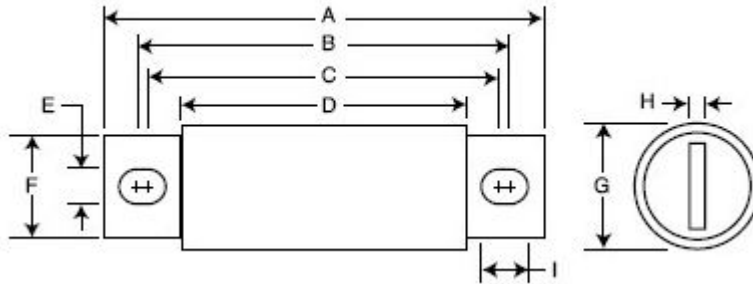
Typical Applications 典型应用:

- DC common bus 电动汽车/直流母线;
- DC drives 直流驱动;
- Power converters/rectifiers 逆变器/整流单元
- Reduced voltage starters 软启/变频启动.



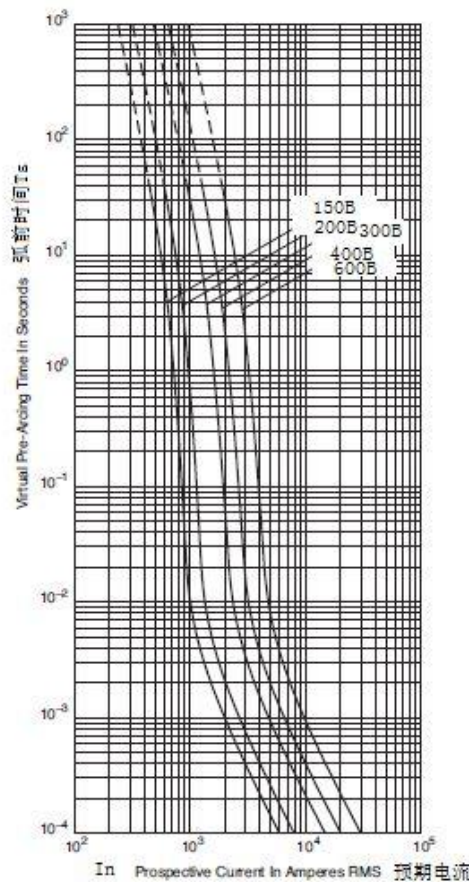
Main Characteristics 主要技术参数 电压等级:600V~600V AC/DC 电流范围:from35A to 600A gR

Dimensions 安装尺寸示意图(mm):



Catalog Numbers 订货号	A	B	C	D	E	F	G	H	I	安装中心距离(mm)
KRF-35B~60B	111	96	85	70	9	15	φ20	3	14	94±1mm
KRF-70B~100B	114	100	89	74	9	18	φ25	3	13.5	94±1mm
KRF-110B~200B	115	98	89	74	9	22	φ30	5	12	94±1mm
KRF-225B~400B	134	112	91	74	10.5	25	φ36	5.5	20	100±1mm
KRF-450B~600B	131	111	90	73	10.5	38	φ50	6	19	100±1mm

Time-Current Curve 时间-电流特性曲线图



Main Characteristics 主要技术参数 电压等级:600V~600V AC/DC 电流范围:from1A to 1000A gR

Catalog Numbers 订货号	Designation Type 型号规格	Electrical Characteristics 电气特性				
		Rating Ampere 电流 (A)	Rating Voltage 电压 $U_n(V)$	Pre-arcing 弧前 $I^2t (A^2S)$	Total 熔断 I^2t @(A^2S)	Watts Loss 功耗(W)
KRC-1B	KRC-1A/600VDC/AC	1A	600V/600V DC/AC	0.06	0.11	1.3
KRC-2B	KRC-2A/600VDC/AC	2A	600V/600V DC/AC	0.22	0.45	2
KRC-3B	KRC-3A/600VDC/AC	3A	600V/600V DC/AC	0.5	1	2.3
KRC-4B	KRC-4A/600VDC/AC	4A	600V/600V DC/AC	0.9	1.8	2.3
KRC-5B	KRC-5A/600VDC/AC	5A	600V/600V DC/AC	1.4	2.8	2.6
KRC-6B	KRC-6A/600VDC/AC	6A	600V/600V DC/AC	2.0	4.0	2.8
KRC-7B	KRC-7A/600VDC/AC	7A	600V/600V DC/AC	2.7	5.4	3.2
KRC-8B	KRC-8A/600VDC/AC	8A	600V/600V DC/AC	3.6	7.1	3.6
KRC-10B	KRC-10A/600VDC/AC	10A	600V/600V DC/AC	16	40	3.8
KRC-12B	KRC-12A/600VDC/AC	12A	600V/600V DC/AC	22	64	4.2
KRC-15B	KRC-15A/600VDC/AC	15A	600V/600V DC/AC	35	100	4.5
KRC-17.5B	KRC-17.5A/600VDC/AC	17.5A	600V/600V DC/AC	45	140	4.5
KRC-20B	KRC-20A/600VDC/AC	20A	600V/600V DC/AC	60	170	4.2
KRC-25B	KRC-25A/600VDC/AC	25A	600V/600V DC/AC	95	275	7.3
KRC-30B	KRC-30A/600VDC/AC	30A	600V/600V DC/AC	140	400	8.7
KRC-35B	KRC-35A/600VDC/AC	35A	600V/600V DC/AC	270	1800	5.2
KRC-40B	KRC-40A/600VDC/AC	40A	600V/600V DC/AC	350	2400	6.3
KRC-45B	KRC-45A/600VDC/AC	45A	600V/600V DC/AC	450	3000	6.7
KRC-50B	KRC-50A/600VDC/AC	50A	600V/600V DC/AC	550	3600	7.4
KRC-60B	KRC-60A/600VDC/AC	60A	600V/600V DC/AC	800	5400	7.5
KRC-70B	KRC-70A/600VDC/AC	70A	600V/600V DC/AC	4000	13000	7.6
KRC-80B	KRC-80A/600VDC/AC	80A	600V/600V DC/AC	5300	17000	8.9
KRC-90B	KRC-90A/600VDC/AC	90A	600V/600V DC/AC	6700	22000	9.7
KRC-100B	KRC-100A/600VDC/AC	100A	600V/600V DC/AC	8300	27000	11
KRC-110B	KRC-110A/600VDC/AC	110A	600V/600V DC/AC	9500	31000	11
KRC-125B	KRC-125A/600VDC/AC	125A	600V/600V DC/AC	13000	42000	12
KRC-150B	KRC-150A/600VDC/AC	150A	600V/600V DC/AC	19000	60000	14
KRC-175B	KRC-175A/600VDC/AC	175A	600V/600V DC/AC	25000	80000	16
KRC-200B	KRC-200A/600VDC/AC	200A	600V/600V DC/AC	33000	110000	19
KRC-225B	KRC-225A/600VDC/AC	225A	600V/600V DC/AC	42000	140000	21
KRC-250B	KRC-250A/600VDC/AC	250A	600V/600V DC/AC	52000	170000	26
KRC-300B	KRC-300A/600VDC/AC	300A	600V/600V DC/AC	75000	240000	29
KRC-350B	KRC-350A/600VDC/AC	350A	600V/600V DC/AC	100000	340000	35
KRC-400B	KRC-400A/600VDC/AC	400A	600V/600V DC/AC	130000	490000	37
KRC-450B	KRC-450A/600VDC/AC	450A	600V/600V DC/AC	170000	620000	42
KRC-500B	KRC-500A/600VDC/AC	500A	600V/600V DC/AC	210000	770000	47

Main Characteristics 主要技术参数 电压等级:600V~600V AC/DC 电流范围:from1A to 1000A gR

Catalog Numbers 订货号	Designation Type 型号规格	Electrical Characteristics 电气特性				
		Rating Ampere 电流 (A)	Rating Voltage 电压 $U_n(V)$	Pre-arcing 弧前 $I^2t (A^2S)$	Total 熔断 I^2t @(A^2S)	Watts Loss 功耗(W)
KRC-600B	KRC-600A/600VDC/AC	600A	600V/600V DC/AC	300000	1100000	56
KRC-700B	KRC-700A/600VDC/AC	700A	600V/600V DC/AC	430000	1700000	57
KRC-800B	KRC-800A/600VDC/AC	800A	600V/600V DC/AC	560000	2250000	59
KRC-1000B	KRC-1000A/600VDC/AC	1000A	600V/600V DC/AC	875000	3500000	72

Ratings等级:

Volts电压:— 600Vac/dc;

Amps电流:1A~1000A;

IR 分断能力: 200KA RSM/@600VAC;

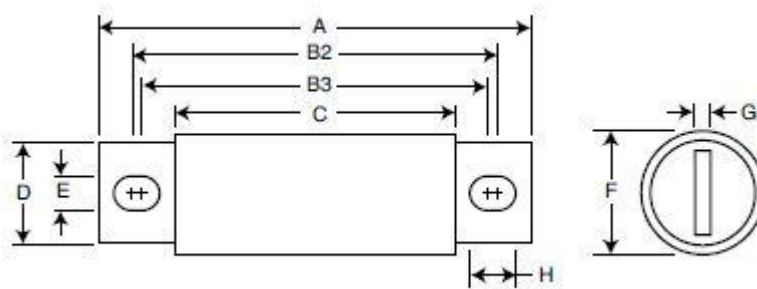
Features and Benefits 特性和优点:

- Excellent dc performance 极佳的直流特性;
- Low arc voltage and low energy let-through (I^2t)低电弧电压、低电弧能量值;
- Low watts loss 低功耗; • Superior cycling capability 循环使用性能;

Typical Applications 典型应用:

- DC common bus 电动汽车/直流母线;
- DC drives 直流驱动;
- Power converters/rectifiers 逆变器/整流单元
- Reduced voltage starters 软启/变频启动.

Dimensions安装尺寸示意图(mm):



Catalog Numbers订货号	A	B2	B3	C	D	E	F	G	H	安装中心距离mm
KRC-1B~30B	73	66	62	48	10	6	Φ14	1.5	7	64±1mm
KRC-35B~60B	111	96	84	70	15	9	Φ21	3	14	90±1mm
KRC-70B~100B	127	103	90	70	18	9	Φ25	3	14.5	94±1mm
KRC-110B~200B	134	112	93	74	25	10.5	Φ36	5.5	20	100±1mm
KRC-225B~400B	134	114	92	76	38	10.5	Φ51	6	19	102±1mm
KRC-450B~800B	186	154	108	78	50	13.5	Φ64	10	33	132±1mm
KRC-1000B	184	124	118	78	70	14	Φ89	10	18	121±1mm

Main Characteristics 主要技术参数 电压等级:700V~700V AC/DC 电流范围:from5A to 800A gR

Catalog Numbers 订货号	Designation Type 型号规格	Electrical Characteristics 电气特性				
		Rating Ampere 电流 (A)	Rating Voltage 电压 $U_n(V)$	Pre-arcing 弧前 $I^2t (A^2S)$	Total 熔断 I^2t @(A^2S)	Watts Loss 功耗(W)
KRP-5B	KRP-5A/700V AC/DC	5A	700V/700V DC/AC	1.6	4	1.5
KRP-10B	KRP-10A/700V AC/DC	10A	700V/700V DC/AC	3.6	10	4.0
KRP-15B	KRP-15A/700V AC/DC	15A	700V/700V DC/AC	10	22	5.5
KRP-20B	KRP-20A/700V AC/DC	20A	700V/700V DC/AC	26	60	6.0
KRP-25B	KRP-25A/700V AC/DC	25A	700V/700V DC/AC	44	130	7.0
KRP-30B	KRP-30A/700V AC/DC	30A	700V/700V DC/AC	58	150	9.0
KRP-35B	KRP-35A/700V AC/DC	35A	700V/700V DC/AC	80	370	9.8
KRP-40B	KRP-40A/700V AC/DC	40A	700V/700V DC/AC	100	460	11.5
KRP-50B	KRP-50A/700V AC/DC	50A	700V/700V DC/AC	200	840	13.4
KRP-60B	KRP-60A/700V AC/DC	60A	700V/700V DC/AC	310	1300	15
KRP-70B	KRP-70A/700V AC/DC	70A	700V/700V DC/AC	470	2200	17
KRP-80B	KRP-80A/700V AC/DC	80A	700V/700V DC/AC	620	2900	20
KRP-90B	KRP-90A/700V AC/DC	90A	700V/700V DC/AC	800	3700	23
KRP-100B	KRP-100A/700V AC/DC	100A	700V/700V DC/AC	1030	4800	25
KRP-125B	KRP-125A/700V AC/DC	125A	700V/700V DC/AC	1800	7300	28
KRP-150B	KRP-150A/700V AC/DC	150A	700V/700V DC/AC	2900	11700	32
KRP-175B	KRP-175A/700V AC/DC	175A	700V/700V DC/AC	4200	16700	35
KRP-200B	KRP-200A/700V AC/DC	200A	700V/700V DC/AC	5600	22000	43
KRP-225B	KRP-225A/700V AC/DC	225A	700V/700V DC/AC	7700	31300	45
KRP-250B	KRP-250A/700V AC/DC	250A	700V/700V DC/AC	10500	42500	48
KRP-300B	KRP-300A/700V AC/DC	300A	700V/700V DC/AC	17600	71200	58
KRP-350B	KRP-350A/700V AC/DC	350A	700V/700V DC/AC	23700	95600	65
KRP-400B	KRP-400A/700V AC/DC	400A	700V/700V DC/AC	31000	125000	78
KRP-450B	KRP-450A/700V AC/DC	450A	700V/700V DC/AC	36400	137000	94
KRP-500B	KRP-500A/700V AC/DC	500A	700V/700V DC/AC	45200	170000	107
KRP-600B	KRP-600A/700V AC/DC	600A	700V/700V DC/AC	66700	250000	122
KRP-700B	KRP-700A/700V AC/DC	700A	700V/700V DC/AC	54000	300000	125
KRP-800B	KRP-800A/700V AC/DC	800A	700V/700V DC/AC	78000	450000	140



Main Characteristics 主要技术参数 电压等级:700V~700V AC/DC 电流范围:from5A to 800A gR

Ratings等级:

Volts电压:—700Vac/dc;

Amps电流:5A~800A;

IR 分断能力: 200KA RSM/@700VAC; 50KA @700VDC

Features and Benefits 特性和优点:

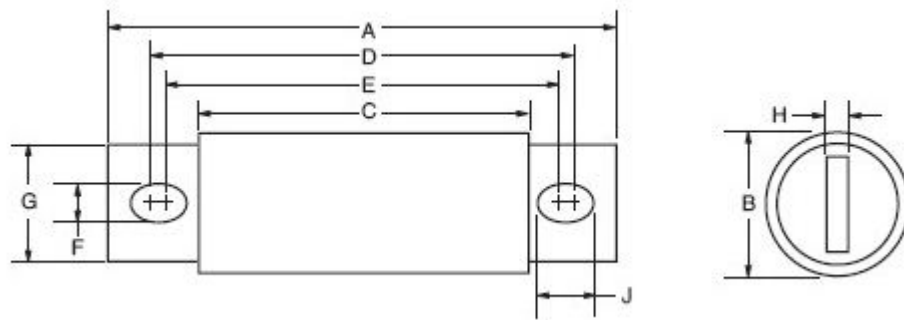
- Excellent dc performance 极佳的直流特性;
- Low arc voltage and low energy let-through (I2t)低电弧电压、低电弧能量值;
- Low watts loss 低功耗; • Superior cycling capability 循环使用性能;

Typical Applications 典型应用:

- DC common bus 电动汽车/直流母线;
- DC drives 直流驱动;
- Power converters/rectifiers 逆变器/整流单元
- Reduced voltage starters 软启/变频启动.



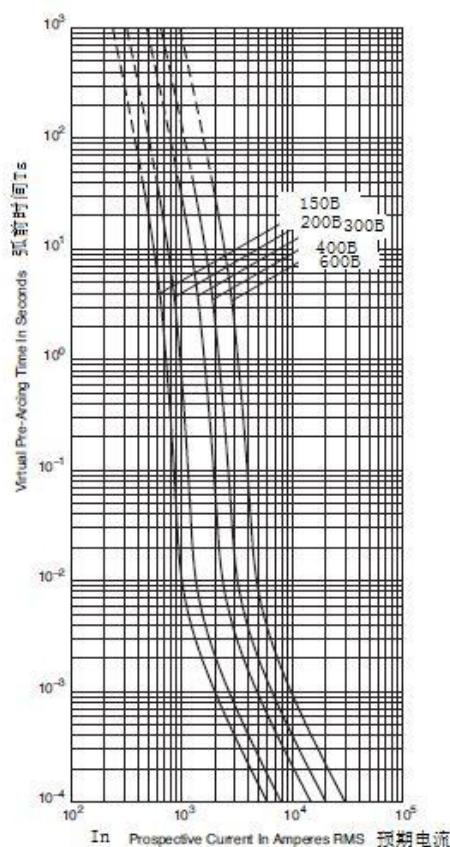
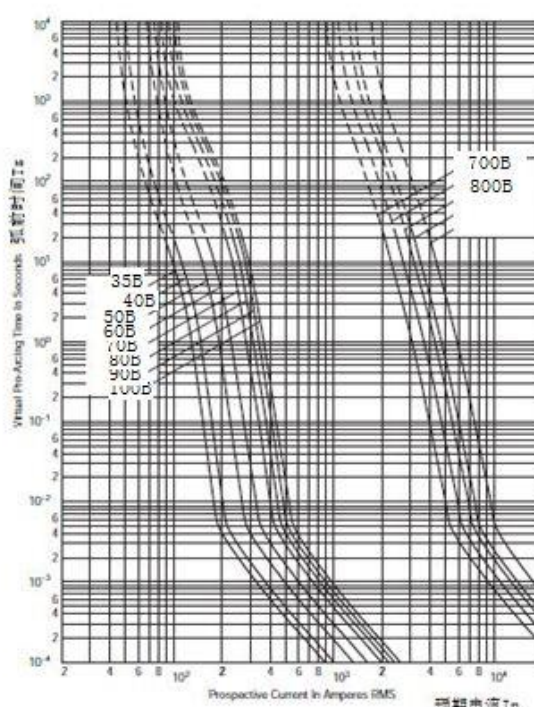
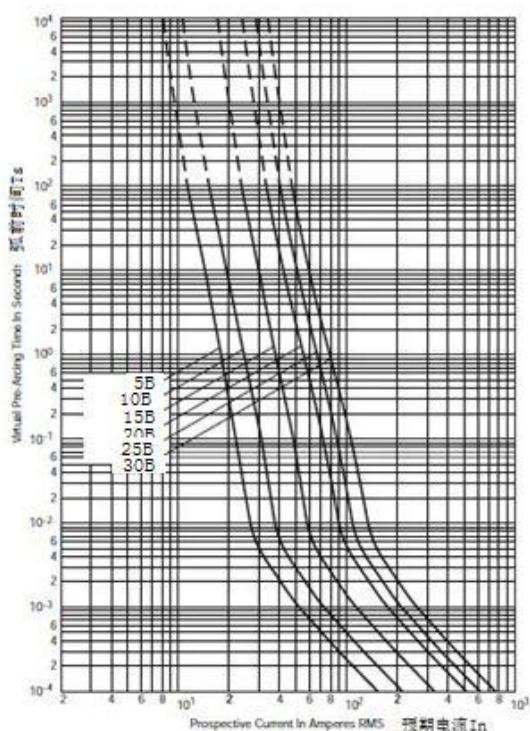
Dimensions安装尺寸示意图(mm):



Catalog Numbers 订货号	A	B	C	D	E	F	G	H	J	安装中心距离 (mm)
KRP-5B~30B	73	Φ14	47	64	60	6.5	10	1.5	6.5	63±1mm
KRP-35B~60B	111	Φ20	70	96	84	9	15	3	14	98±1mm
KRP-70B~100B	112	Φ25	66	98	84	9	18	3	14.5	90±1mm
KRP-125B~200B	132	Φ36	72	110	87	10.5	25	5.5	20	98±1mm
KRP-225B~400B	129	Φ51	72	110	89	10.5	38	6	19	98±1mm
KRP-450B~600B	180	Φ64	72	146	104	13.5	50	10	33	126±1mm
KRP-700B~800B	168	Φ76	72	141	129	16	60	11	33	136±1mm

Main Characteristics 主要技术参数 电压等级:700V~700V AC/DC 电流范围:from5A to 800A gR

Time-Current Curve时间-电流特性曲线图:



Main Characteristics 主要技术参数 电压等级:1000V~1000V AC/DC 电流范围:from35A to 2000A gR

Catalog Numbers 订货号	Designation Type 型号规格	Electrical Characteristics 电气特性				
		Rating Ampere 电流 (A)	Rating Voltage 电压 $U_n(V)$	Pre-arcing 弧前 $I^2t(A^2S)$	Total 熔断 $I^2t@(A^2S)$	Watts Loss 功耗(W)
KRJ-35B	KRJ-35A/1000VAC/DC	35A	1000V/1000V DC/AC	210	2000	7
KRJ-40B	KRJ-40A/1000VAC/DC	40A	1000V/1000V DC/AC	300	2500	8
KRJ-50B	KRJ-50A/1000VAC/DC	50A	1000V/1000V DC/AC	470	3500	10
KRJ-60B	KRJ-60A/1000VAC/DC	60A	1000V/1000V DC/AC	670	5000	11
KRJ-70B	KRJ-70A/1000VAC/DC	70A	1000V/1000V DC/AC	1100	6900	12
KRJ-80B	KRJ-80A/1000VAC/DC	80A	1000V/1000V DC/AC	1550	9700	13
KRJ-90B	KRJ-90A/1000VAC/DC	90A	1000V/1000V DC/AC	1900	12000	14
KRJ-100B	KRJ-100A/1000VAC/DC	100A	1000V/1000V DC/AC	2800	17500	15
KRJ-125B	KRJ-125A/1000VAC/DC	125A	1000V/1000V DC/AC	4800	35000	16
KRJ-150B	KRJ-150A/1000VAC/DC	150A	1000V/1000V DC/AC	6300	45000	25
KRJ-175B	KRJ-175A/1000VAC/DC	175A	1000V/1000V DC/AC	7500	65000	30
KRJ-200B	KRJ-200A/1000VAC/DC	200A	1000V/1000V DC/AC	11700	80000	32
KRJ-250B	KRJ-250A/1000VAC/DC	250A	1000V/1000V DC/AC	16000	112000	50
KRJ-300B	KRJ-300A/1000VAC/DC	300A	1000V/1000V DC/AC	23500	164000	56
KRJ-350B	KRJ-350A/1000VAC/DC	350A	1000V/1000V DC/AC	33000	231000	62
KRJ-400B	KRJ-400A/1000VAC/DC	400A	1000V/1000V DC/AC	47000	330000	67
KRJ-500B	KRJ-500A/1000VAC/DC	500A	1000V/1000V DC/AC	39500	329000	95
KRJ-600B	KRJ-600A/1000VAC/DC	600A	1000V/1000V DC/AC	61000	520000	105
KRJ-800B	KRJ-800A/1000VAC/DC	800A	1000V/1000V DC/AC	87000	590000	182
KRJ-1000B	KRJ-1000A/1000VAC/DC	1000A	1000V/1000V DC/AC	190000	1100000	206
KRJ-1200B	KRJ-1200A/1000VAC/DC	1200A	1000V/1000V DC/AC	370000	2100000	240
KRJ-1400B	KRJ-1400A/1000VAC/DC	1400A	1000V/1000V DC/AC	470000	2700000	248
KRJ-1600B	KRJ-1600A/1000VAC/DC	1600A	1000V/1000V DC/AC	700000	4000000	267
KRJ-1800B	KRJ-1800A/1000VAC/DC	1800A	1000V/1000V DC/AC	925000	5300000	275
KRJ-2000B	KRJ-2000A/1000VAC/DC	2000A	1000V/1000V DC/AC	1330000	7600000	284

Ratings等级:

Volts电压:—1000Vac/dc; Amps电流:35A~2000A;

IR 分断能力: 200KA RSM/@1000VAC; 50KA @800VDC

Features and Benefits 特性和优点:

- Excellent dc performance 极佳的直流特性;
- Low arc voltage and low energy let-through (I²t)低电弧电压、低电弧能量值;
- Low watts loss 低功耗; • Superior cycling capability 循环使用性能;

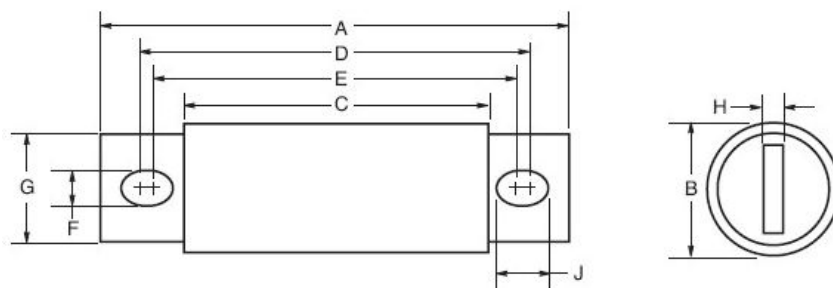
Typical Applications 典型应用:

- DC common bus 电动汽车/直流母线; • DC drives 直流驱动; • Power converters/rectifiers 逆变器/整流单元; • Reduced voltage starters 软启/变频启动.



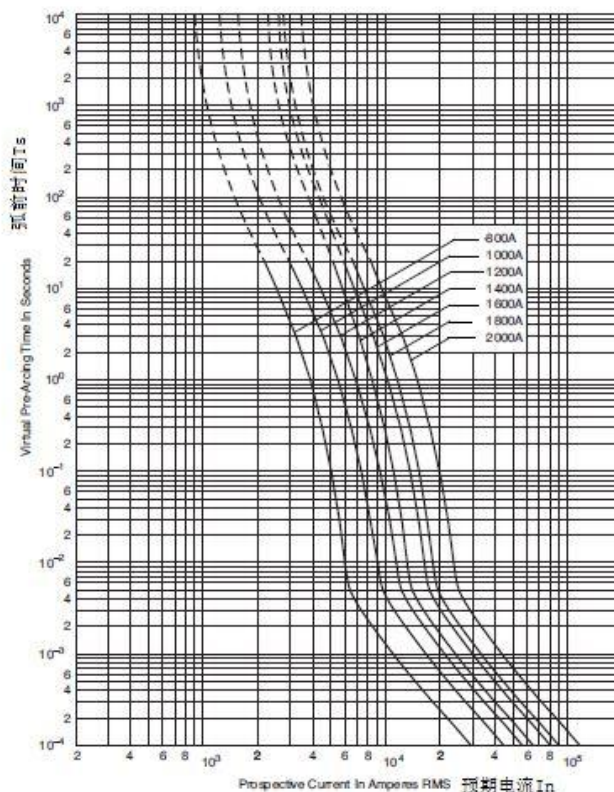
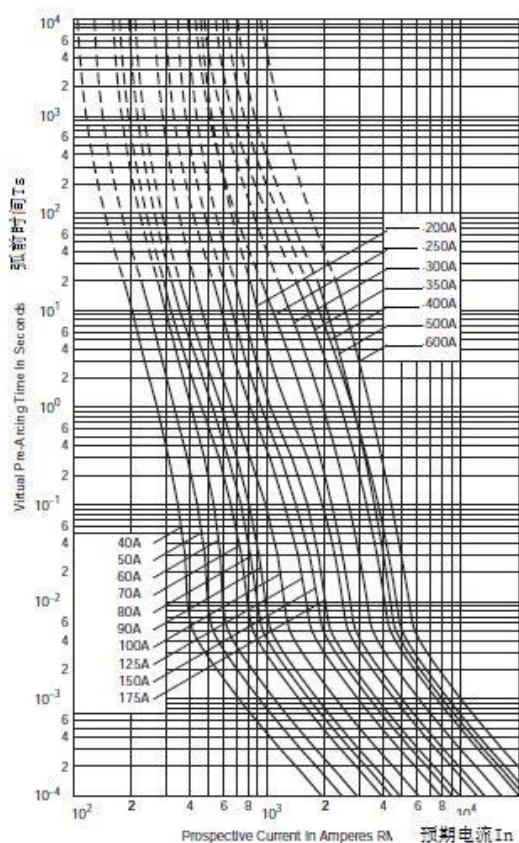
Main Characteristics 主要技术参数 电压等级:1000V~1000V AC/DC 电流范围:from 35A to 2000A gR

Dimensions 安装尺寸示意图(mm):



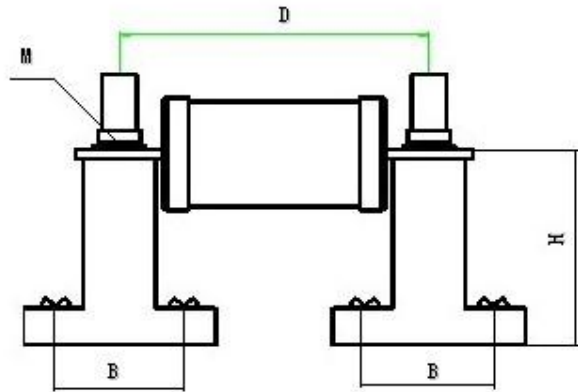
Catalog Numbers 订货号	A	B	C	D	E	F	G	H	J	安装中心距离 (mm)
KRJ-35B~60B	135	Φ25	79	111	97	9	18	3	13.5	105±1mm
KRJ-70B~100B	125	Φ30	79	108	106	9	22	5	12	107±1mm
KRJ-125B~200B	144	Φ36	83	123	99	10.5	25	5.5	20	110±1mm
KRJ-250B~400B	147	Φ51	89	125	105	10.5	38	6	19	115±1mm
KRJ-500B~600B	196	Φ64	88	160	120	13.5	50	10	33	142±1mm
KRJ-800B~2000B	173	Φ89	84	139	126	16	70	13	22	132±1mm

Time-Current Curve 时间-电流特性曲线图:



Main Characteristics 主要技术参数: 电压等级:500V~1000VDC/AC 基座—白色绝缘子
 分断能力: High interrupting rating50 kA 执行标准 Standard IEC: 60269-Part -4、BS 88 Part 4..

Fuse holder Dimensions安装尺寸 (mm):



Catalog Numbers 订货号	Rating Voltage 电压 U_e (V)	D	H	M	基座安装中心距 B
MBZ30-500V	500V/500V DC/AC	75	35	M8	30
MBZ40-500V	500V/500V DC/AC	78.5	35	M8	30
MBZ50-500V	500V/500V DC/AC	80	35	M8	30
MBZ30-700V	700V/700V DC/AC	92	55	M8	30
MBZ40-700V	700V/700V DC/AC	98	55	M10	30
MBZ50-700V	700V/700V DC/AC	99.5	55	M10	30
MBZ30-1000V	1000V/1000V DC/AC	107	55	M8	30
MBZ40-1000V	1000V/1000V DC/AC	117	55	M10	30
MBZ50-1000V	1000V/1000V DC/AC	114	55	M10	30