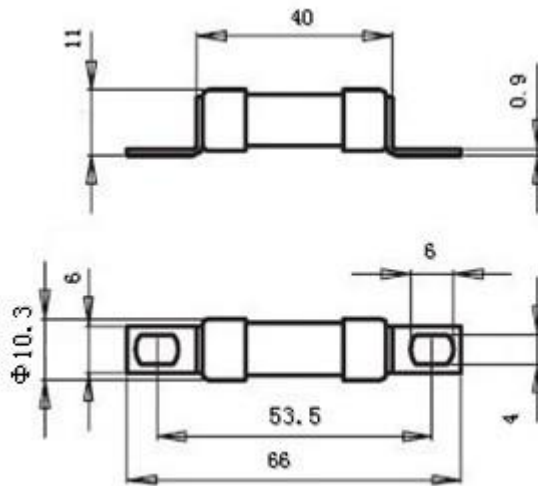


Main Characteristics 主要技术参数: 电压等级: 500VAC~500VDC 电流范围: from 4A to 30A Class 类别: gR
 尺寸 Size : $\Phi 10 \times 39$ 分断能力 High interrupting rating 10 kA. 标准 Standard IEC 60269-Part -4、BS 88 Part 4..

Catalog Numbers 订货号	Kaiert Type 型号规格	Rated Current I_N (A) 电流	Rating Voltage 电压 U_n (V)	Pre-arcing I^2t @1ms A^2S 弧前 I^2t	Total clearing I^2t @ $U_n A^2S$ 熔断 I^2t	Power Loss W 功耗	
						0.8I _N	I _N
BS1003	BS10-3A/500VAC/DC	3A	500VAC/DC	0.5	3	0.4	1.0
BS1004	BS10-4A/500VAC/DC	4A	500VAC/DC	0.7	6	0.5	1.2
BS1005	BS10-5A/500VAC/DC	5A	500VAC/DC	1.3	11	0.6	1.4
BS1006	BS10-6A/500VAC/DC	6A	500VAC/DC	1.8	17	0.7	1.6
BS1008	BS10-8A/500VAC/DC	8A	500VAC/DC	4.8	28	0.8	1.8
BS1010	BS10-10A/500VAC/DC	10A	500VAC/DC	5.3	48	1.2	2.1
BS1012	BS10-12A/500VAC/DC	12A	500VAC/DC	7.4	63	1.6	2.9
BS1016	BS10-16A/500VAC/DC	16A	500VAC/DC	10	120	2.1	4.5
BS1020	BS10-20A/500VAC/DC	20A	500VAC/DC	17	200	2.9	5.8
BS1025	BS10-25A/500VAC/DC	25A	500VAC/DC	40	420	3.2	6.8
BS1032	BS10-32A/500VAC/DC	32A	500VAC/DC	60	730	4.0	8.2

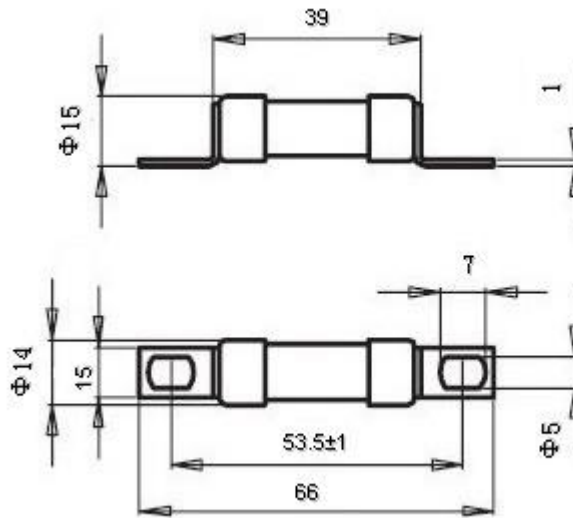
Dimensions 安装尺寸 (mm):



Main Characteristics 主要技术参数: 电压等级: 660VAC~550VDC 电流范围: from 6A to 50A Class 类别: gR
 尺寸 Size : $\Phi 14 \times 51$ 分断能力 High interrupting rating 30 kA. 标准 Standard IEC 60269-Part -4、BS 88 Part 4.

Catalog Numbers 订货号	Kaiert Type 型号规格	Rated Current I_N (A) 电流	Rating Voltage 电压 U_n (V)	Pre-arcting I^2t @1ms A^2S 弧前 I^2t	Total clearing I^2t @ $U_n A^2S$ 熔断 I^2t	Power Loss W 功耗	
						0.8 I_N	I_N
BS1406	BS14-6A/500VAC/DC	6A	500VAC/DC	3	18	0.5	1.3
BS1408	BS14-8A/500VAC/DC	8A	500VAC/DC	5	27	0.8	1.7
BS1410	BS14-10A/500VAC/DC	10A	500VAC/DC	8	48	1.1	2.4
BS1412	BS14-12A/500VAC/DC	12A	500VAC/DC	12	93	1.2	2.5
BS1416	BS14-16A/500VAC/DC	16A	500VAC/DC	21	150	1.9	4.0
BS1420	BS14-20A/500VAC/DC	20A	500VAC/DC	32	250	2.1	4.6
BS1425	BS14-25A/500VAC/DC	25A	500VAC/DC	63	400	2.6	6.4
BS1432	BS14-32A/500VAC/DC	32A	500VAC/DC	104	680	3.8	8.2
BS1440	BS14-40A/500VAC/DC	40A	500VAC/DC	140	1200	4.1	9.1
BS1450	BS14-50A/500VAC/DC	50A	500VAC/DC	230	1600	5.8	12

Dimensions 安装尺寸 (mm):



Main Characteristics 主要技术参数: 电压等级: 500VAC~550VDC 电流范围: from 50A to 400A Class 类别: gR
 尺寸 Size : $\Phi 30 \times 42$ 分断能力 High interrupting rating 100 kA. 标准 Standard IEC 60269-Part -4、BS 88 Part 4.

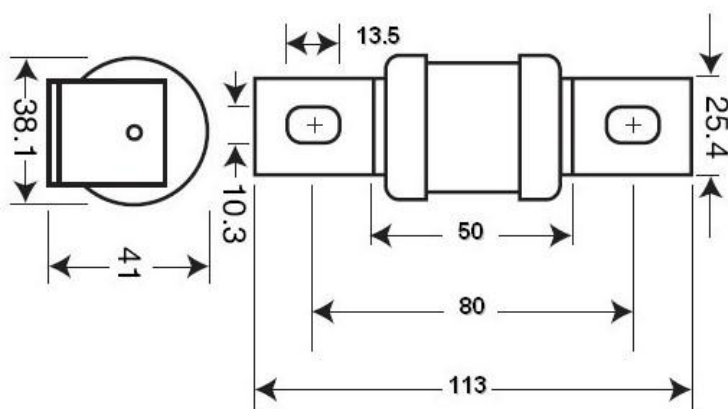
Catalog Numbers 订货号	Kaiert Type 型号规格	Rated Current I_N (A) 电流	Rating Voltage 电压 U_n (V)	Pre-arcting I^2t @1ms A^2S 弧前 I^2t	Total clearing I^2t @ $U_n A^2S$ 熔断 I^2t	Power Loss W 功耗	
						0.8 I_N	I_N
X097103	BS88-50A/500VAC/DC	50A	500VAC/DC	180	990	7.3	14
H097113	BS88-65A/500VAC/DC	65A	500VAC/DC	335	1840	8.8	17
H097136	BS88-75A/500VAC/DC	75A	500VAC/DC	350	2000	9.7	19.5
M097163	BS88-85A/500VAC/DC	85A	500VAC/DC	480	4000	12.2	22.8
N097164	BS88-90A/500VAC/DC	90A	500VAC/DC	720	4700	13.2	23.5
P097165	BS88-110A/500VAC/DC	110A	500VAC/DC	1180	6900	18.9	25.5
Q097166	BS88-150A/500VAC/DC	150A	500VAC/DC	2880	14500	19.1	35.3
R097167	BS88-180A/500VAC/DC	180A	500VAC/DC	5350	25500	19.7	35.7
V097170	BS88-200A/500VAC/DC	200A	500VAC/DC	9510	46000	20	36.7
W097171	BS88-250A/500VAC/DC	250A	500VAC/DC	21400	110000	20.3	37.5
A097175	BS88-280A/500VAC/DC	280A	500VAC/DC	29100	145000	22.3	38
B097176	BS88-315A/500VAC/DC	315A	500VAC/DC	38100	180000	26	42
C097177	BS88-355A/500VAC/DC	355A	500VAC/DC	48200	215000	26.9	48
D097178	BS88-400A/500VAC/DC	400A	500VAC/DC	72000	305000	27	50

Ratings: AC: 50-400A 100kA, 690VAC 交流分断能力; DC: 550VDC, L/R = 10ms 直流回路的使用范围

Extremely Fast Acting 快速保护、Low I^2t 低 I^2t 。

Protection of small inverters, UPS systems motor drives and similar 700V or less equipment 保护小型逆变器、不间断电源、电机驱动等

Dimensions 安装尺寸 (mm):



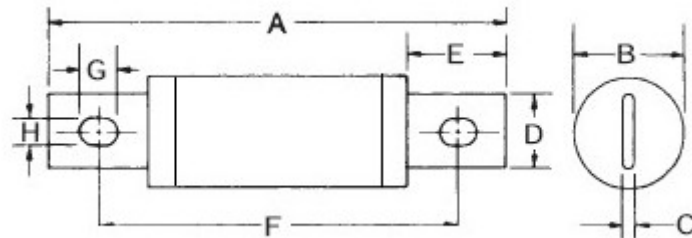
Main Characteristics 主要技术参数: 电压等级:450V~500VDC 电流范围: from 50A to 600A
 分断能力 High interrupting rating50 kA.执行标准Standard IEC 60269-Part -4、BS 88 Part 4.. Class类别: gR

Catalog Numbers 订货号	Designation Type 型号规格	Electrical Characteristics 电气特性				
		Rating Voltage 电压 U_n (V)	Rating Ampere 电流 (A)	Pre-arcing 弧前 I^2t (A ² S)	Total 熔断 I^2t @ (A ² S)	Watts Loss 功耗 (W)
B2774	JK25-50A/500VAC/DC	500V/500V AC/DC	50A	280	1930	8.0
B2775	JK25-60A/500VAC/DC	500V/500V AC/DC	60A	410	2700	9.4
B2794	JK30-60A/500VAC/DC	500V/500V AC/DC	60A	395	2100	10.5
B2776	JK30-70A/500VAC/DC	500V/500V AC/DC	70A	420	2730	12.7
B2777	JK30-80A/500VAC/DC	500V/500V AC/DC	80A	430	2740	13.4
B2780	JK30-90A/500VAC/DC	500V/500V AC/DC	90A	590	3800	15.6
B2778	JK30-100A/500VAC/DC	500V/500V AC/DC	100A	730	4700	16.8
B2779	JK30-125A/500VAC/DC	500V/500V AC/DC	125A	1100	5950	24
B2870	JK30-150A/500VAC/DC	500V/500V AC/DC	150A	2000	10800	26
B2871	JK30-175A/500VAC/DC	500V/500V AC/DC	175A	2800	15300	30
B2872	JK30-200A/500VAC/DC	500V/500V AC/DC	200A	3900	21000	32
B2873	JK30-225A/500VAC/DC	500V/500V AC/DC	225A	4600	23300	39
B2874	JK30-250A/500VAC/DC	500V/500V AC/DC	250A	6300	32200	41
B2875	JK40-275A/500VAC/DC	500V/500V AC/DC	275A	7900	40300	46
B2876	JK40-300A/500VAC/DC	500V/500V AC/DC	300A	9800	49800	51
B2879	JK40-325A/500VAC/DC	500V/500V AC/DC	325A	13700	63800	53
B2877	JK40-350A/500VAC/DC	500V/500V AC/DC	350A	14500	72900	58
B2878	JK40-400A/500VAC/DC	500V/500V AC/DC	400A	19200	96700	65
B2970	JK50-450A/500VAC/DC	500V/500V AC/DC	450A	25700	127000	74
B2971	JK50-500A/500VAC/DC	500V/500V AC/DC	500A	29200	149000	84
B2972	JK50-600A/500VAC/DC	500V/500V AC/DC	600A	41300	206000	108



Main Characteristics 主要技术参数: 电压等级:450V~500VDC 电流范围: from 50A to 600A
 分断能力 High interrupting rating50 kA.执行标准Standard IEC 60269-Part -4、BS 88 Part 4.. Class类别: gR

Dimensions安装尺寸:



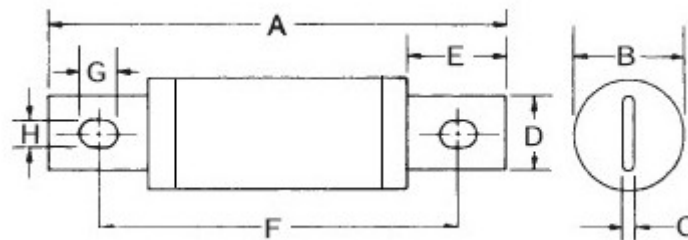
Catalog Numbers 订货号	A	B	C	D	E	F	G	H	安装中心距
B2774~B2874	98	Φ30	2.5	17.5	21	75	9	9	75
B2875~B2878	108	Φ40	4	24	28	78.5	15	11	78.6
B2970~B2972	110	Φ50	4	32	28	80	15.5	11	80



Main Characteristics 主要技术参数: 电压等级:660V~700VDC 电流范围: from 125A to 600A
 分断能力 High interrupting rating 50 kA. 执行标准 Standard IEC 60269-Part -4、BS 88 Part 4.. Class 类别: gR

Catalog Numbers 订货号	Designation Type 型号规格	Electrical Characteristics 电气特性				
		Rating Voltage 电压 U_e (V)	Rating Ampere 电流 (A)	Pre-arcing 弧前 I^2t (A ² S)	Total 熔断 I^2t @ (A ² S)	Watts Loss 功耗 (W)
B307300	JK30-100A/700VAC/DC	700V/700V DC/AC	100	1600	6300	26
B307301	JK30-125A/700VAC/DC	700V/700V DC/AC	125	1800	7300	28
B307302	JK30-150A/700VAC/DC	700V/700V DC/AC	150	2900	11700	32
B307303	JK30-175A/700VAC/DC	700V/700V DC/AC	175	4200	16700	35
B307304	JK30-200A/700VAC/DC	700V/700V DC/AC	200	5600	22000	43
B406901	JK40-200A/700VAC/DC	700V/700V DC/AC	200	4900	28000	44
B406902	JK40-225A/700VAC/DC	700V/700V DC/AC	225	7700	31300	45
B406903	JK40-250A/700VAC/DC	700V/700V DC/AC	250	10500	42500	48
B406904	JK40-300A/700VAC/DC	700V/700V DC/AC	300	17600	71200	58
B406905	JK40-350A/700VAC/DC	700V/700V DC/AC	350	23700	95600	65
B406906	JK40-400A/700VAC/DC	700V/700V DC/AC	400	31000	125000	78
B507001	JK50-350A/700VAC/DC	700V/700V DC/AC	350	291000	11000	75
B507002	JK50-400A/700VAC/DC	700V/700V DC/AC	400	31000	115000	89
B507003	JK50-450A/700VAC/DC	700V/700V DC/AC	450	36400	137000	94
B507004	JK50-500A/700VAC/DC	700V/700V DC/AC	500	45200	170000	107
B507005	JK50-600A/700VAC/DC	700V/700V DC/AC	600	66700	250000	122

Dimensions 安装尺寸:



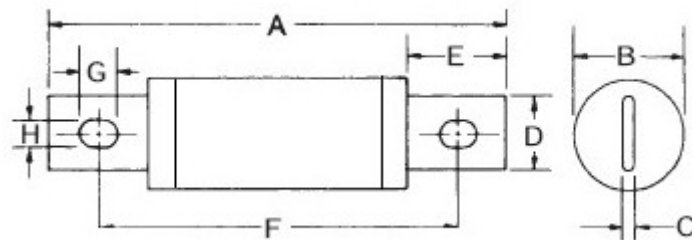
Catalog Numbers 订货号	A	B	C	D	E	F	G	H	安装中心距
B307300~B307304	115	Φ30	2.5	17.5	21	92.5	9	9	92.5
B406901~B406906	128	Φ40	4	24	28	98	15	11	98
B507001~B507005	129	Φ50	4	32	28	99.5	15.5	11	99.5



Main Characteristics 主要技术参数: 电压等级:900V~1000VDC 电流范围: from 70A to 400A
 分断能力 High interrupting rating50 kA.执行标准Standard IEC 60269-Part -4、BS 88 Part 4.. Class类别: gR

Catalog Numbers 订货号	Designation Type 型号规格	Electrical Characteristics 电气特性				
		Rating Voltage 电压 U_e (V)	Rating Ampere 电流 (A)	Pre-arcing 弧前 $I^2(A^2S)$	Total 熔断 $I^2t @ (A^2S)$	Watts Loss 功耗(W)
B308301	JK30-70A/1000VAC/DC	1000V/1000V DC/AC	70	1100	6900	11
B308302	JK30-80A/1000VAC/DC	1000V/1000V DC/AC	80	1550	9700	12
B308303	JK30-90A/1000VAC/DC	1000V/1000V DC/AC	90	1600	12000	13
B308304	JK30-100A/1000VAC/DC	1000V/1000V DC/AC	100	2800	17500	14
B408301	JK40-125A/1000VAC/DC	1000V/1000V DC/AC	125	4800	35000	15
B408302	JK40-150A/1000VAC/DC	1000V/1000V DC/AC	150	6300	45000	16
B408303	JK40-175A/1000VAC/DC	1000V/1000V DC/AC	175	7500	65000	25
B408304	JK40-200A/1000VAC/DC	1000V/1000V DC/AC	200	11700	80000	30
B508301	JK50-250A/1000VAC/DC	1000V/1000V DC/AC	250	9000	50000	32
B508302	JK50-300A/1000VAC/DC	1000V/1000V DC/AC	300	15000	80000	50
B508303	JK50-350A/1000VAC/DC	1000V/1000V DC/AC	350	22000	120000	56
B508304	JK50-400A/1000VAC/DC	1000V/1000V DC/AC	400	32000	180000	62

Dimensions 安装尺寸:

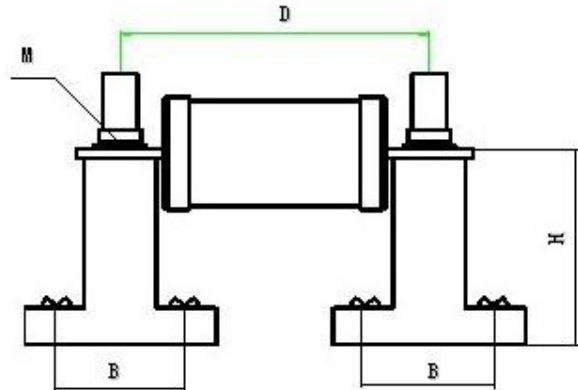


Catalog Numbers 订货号	A	B	C	D	E	F	G	H	安装中心距
B308301~B308304	130	Φ30	2.5	17.5	21	107	9	9	107
B408301~B408304	147	Φ40	4	24	28	117	15	11	117
B508301~B508304	145	Φ50	4	32	28	114	15.5	11	114



Main Characteristics 主要技术参数: 电压等级:500V~1000VDC/AC 基座—白色绝缘子
分断能力: High interrupting rating50 kA 执行标准 Standard IEC: 60269-Part -4、BS 88 Part 4..

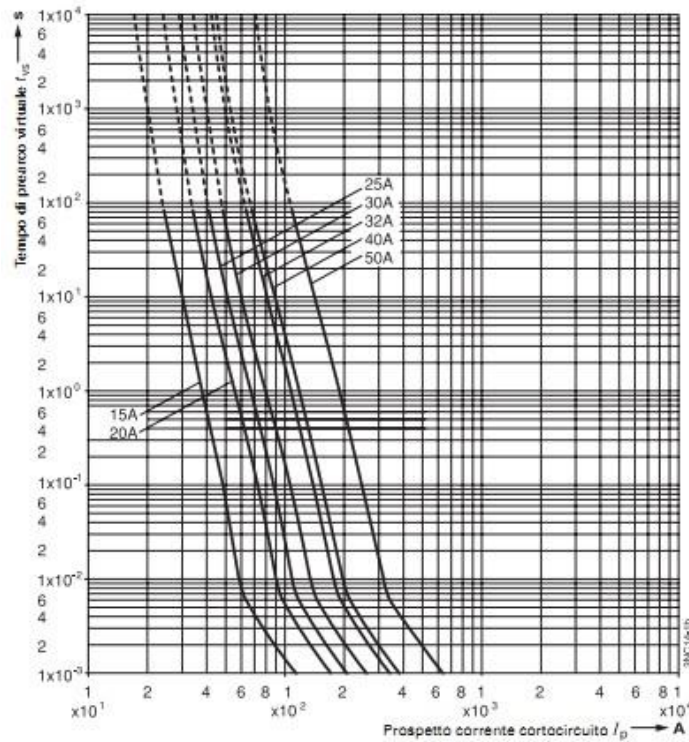
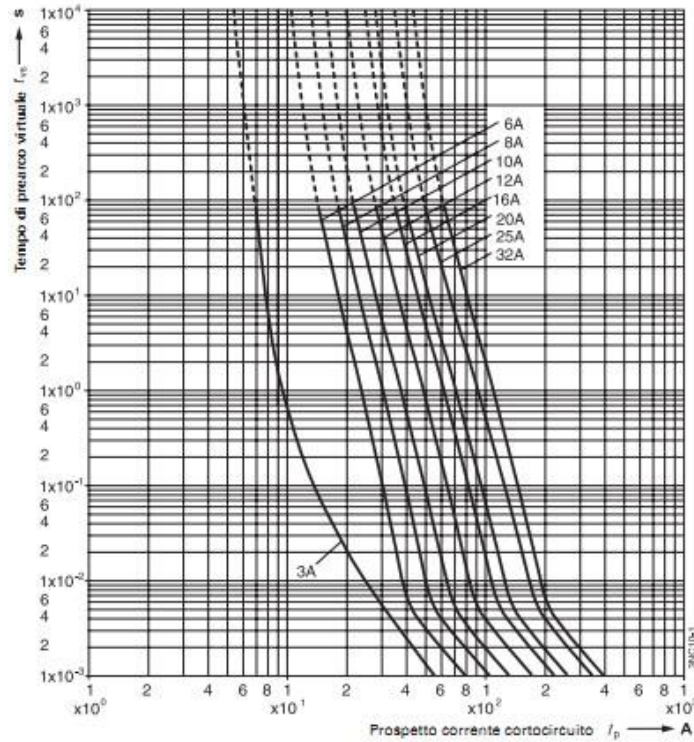
Fuse holder Dimensions安装尺寸 (mm):



Catalog Numbers 订货号	Rating Voltage 电压 U_e (V)	D	H	M	基座安装中心距 B
MBZ30-500V	500V/500V DC/AC	75	35	M8	30
MBZ40-500V	500V/500V DC/AC	78.5	35	M8	30
MBZ50-500V	500V/500V DC/AC	80	35	M8	30
MBZ30-700V	700V/700V DC/AC	92	55	M8	30
MBZ40-700V	700V/700V DC/AC	98	55	M10	30
MBZ50-700V	700V/700V DC/AC	99.5	55	M10	30
MBZ30-1000V	1000V/1000V DC/AC	107	55	M8	30
MBZ40-1000V	1000V/1000V DC/AC	117	55	M10	30
MBZ50-1000V	1000V/1000V DC/AC	114	55	M10	30

Main Characteristics 主要技术参数: 电压等级:500V~1000VDC 电流范围: from 3A to 600A
 分断能力 High interrupting rating 50 kA. 执行标准 Standard IEC 60269-Part -4、BS 88 Part 4.. Class 类别: gR

Time-Current Characteristics: 时间-电流特性曲线:



Main Characteristics 主要技术参数: 电压等级:500V~1000VDC 电流范围: from 3A to 600A
 分断能力 High interrupting rating 50 kA. 执行标准 Standard IEC 60269-Part -4、BS 88 Part 4.. Class 类别: gR

Time-Current Characteristics: 时间-电流特性曲线:

