

Kaiert is a company which designs ,manufactures, sells and markets fuse.

开尔泰公司专门设计、制造、销售各类熔断器。

Product safety is our most important assets ,and for this reason at Kaiert, we have a whole set of advanced equipments to ensure the product quality. Our company firmly carry out the ISO 90001-2008 standard.

产品安全是企业的品质保证，公司有完整的设备来保证产品质量，同时严格执行ISO9001-2008标准质量体系。

Fuses protect power motor from the effects of short circuits because the super quick disconnect characteristic is far quicker than that of conventional . They protect expensive devices and system components such as converters with fuses in the input and in the AC link, UPS systems and soft starters for motors.

当回路短路时熔断器能保护电机，因为熔断器比传统的保护系统动作速度更快，能可靠的保护昂贵的设备和组件系统如UPS系统、变频器、电机软启动器。

Specifications 描述:

Ratings volts电压等级: 2000Vdc

Ratings Amps电流范围: 10A~150A

Main Application主要应用: high voltage motor application 高压电机应用,

Class 类别: branch circuit protection -gR 分支回路保护 全范围型

Agency Information执行标准 : IEC269.4、BS2693-1, IEC60644、IEC60282-1 (2005)

I^2t is lower in industry低 I^2t ,

Faster and safer protection 快速安全保护:

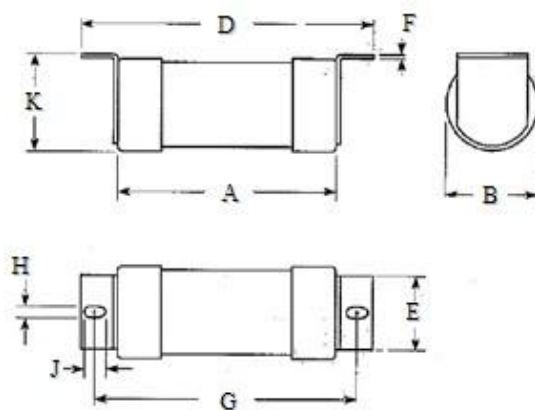


www.Kaiertfuse.com

Size Φ 51、 Φ 77 Rated Voltage 电压 DC2000V Clas 类别 gR Rated Breaking Capacity 分断能力 50kA

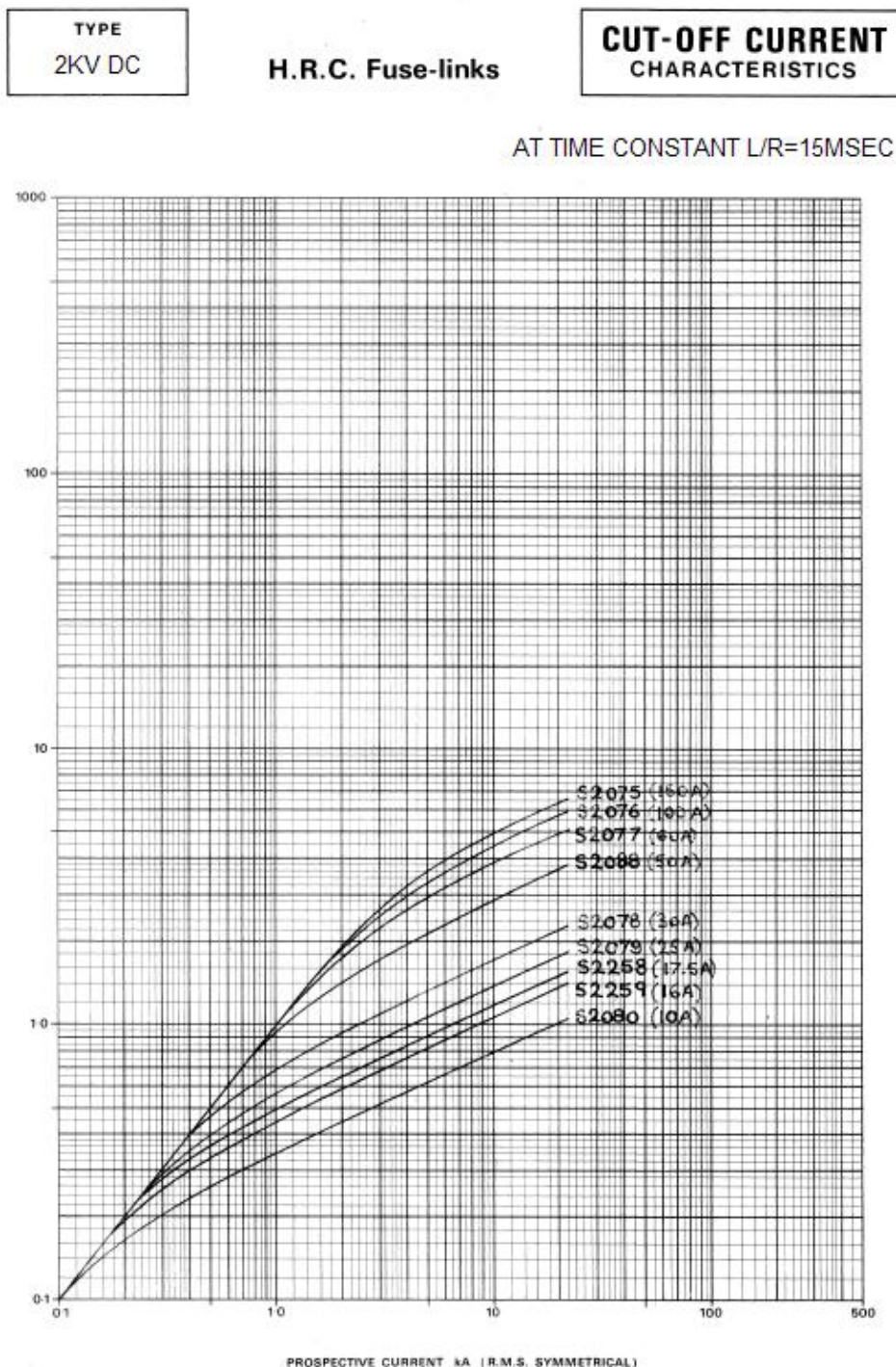
Current rating 电流(A)	Catalog Number 型号规格	Pre-arc I^2t 弧前 I^2t (A ² S)	熔断 Total I^2t -value @DC 2000V I^2t (A ² S)	Power Loss 功耗(W)
10A	S2080-10A/2000VDC	350	260	15
16A	S2259-16A/2000VDC	1100	2000	17
17.5A	S2258-17.5A/2000VDC	2900	4800	18
25A	S2079-25A/2000VDC	6600	12000	19
30A	S2078-30A/2000VDC	12000	19000	21
50A	S2088-50A/2000VDC	20000	33000	23
60A	S2077-60A/2000VDC	40000	66000	38
100A	S2076-100A/2000VDC	78000	140000	45
150A	S2075-150A/2000VDC	130000	210000	64

Outline and installation 安装尺寸图



U_e (V) DC	I_e (A)	Number 订货号	Dimension (mm) 安装尺寸									
			A	B	D	E	F	G	H	J	K	
2000V	10A	S2080	190.5	51	257	45	3.2	235	10	13	55	
2000V	16A	S2259	190.5	51	257	45	3.2	235	10	13	55	
2000V	17.5A	S2258	190.5	51	257	45	3.2	235	10	13	55	
2000V	25A	S2079	190.5	51	257	45	3.2	235	10	13	55	
2000V	30A	S2078	190.5	51	257	45	3.2	235	10	13	55	
2000V	50A	S2088	190.5	51	257	45	3.2	235	10	13	55	
2000V	60A	S2077	190.5	77	257	64	3.2	235	10	13	81	
2000V	100A	S2076	190.5	77	257	64	3.2	235	10	13	81	
2000V	150A	S2075	190.5	77	257	64	3.2	235	10	13	81	

Time vs current characteristic 时间电流特性曲线:



Cut-off current characteristic 限流特性曲线:

